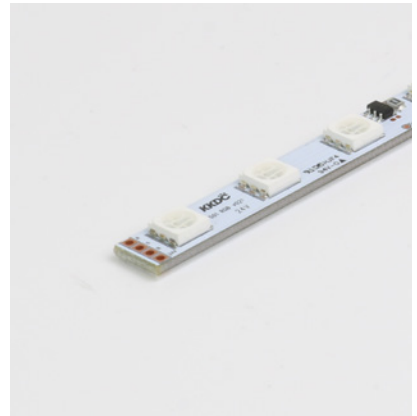
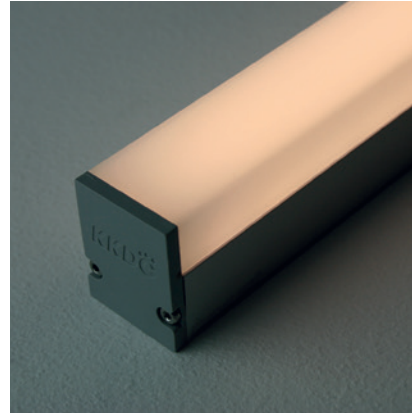


Linear

LINI Glow XL RGB Fixture Guide

KKDÖ

Indoor | Surface | RGB output

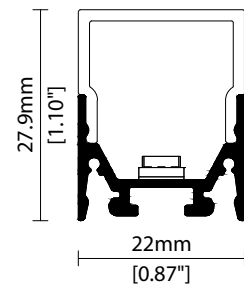


Key applications

- ✓ Architectural detail
- ✓ Cabinet & furniture
- ✓ Direct lighting
- ✓ Interior
- ✓ Mirror back lighting
- ✓ Special effect

Key features

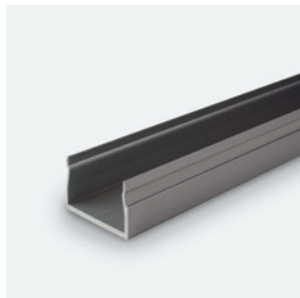
- ✓ Custom lengths
- ✓ Constant Voltage (CV)
- ✓ Continuous light runs
- ✓ Diffusion: homogenous
- ✓ Direct view
- ✓ IP40 dry area
- ✓ RGB



MOUNTING METHODS



KKCP-11 Concealed clip



KKCR-01-1000 Cable raceway (1000mm)
KKCR-01-2000 Cable raceway (2000mm)
KKCR-01-3000 Cable raceway (3000mm)



KKJT-02 Joining bar

Linear

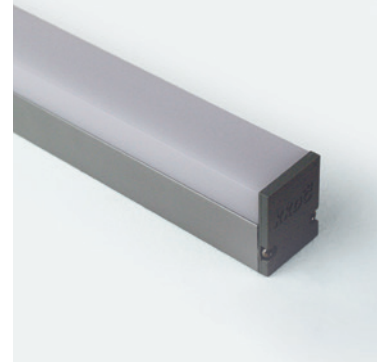
LINI Glow XL RGB

Specification sheet

KKDC



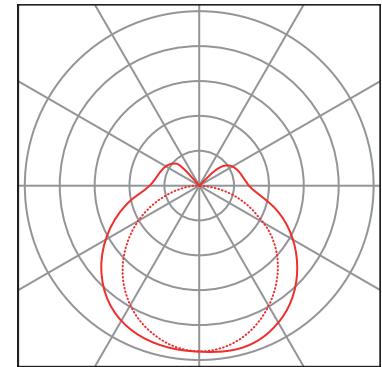
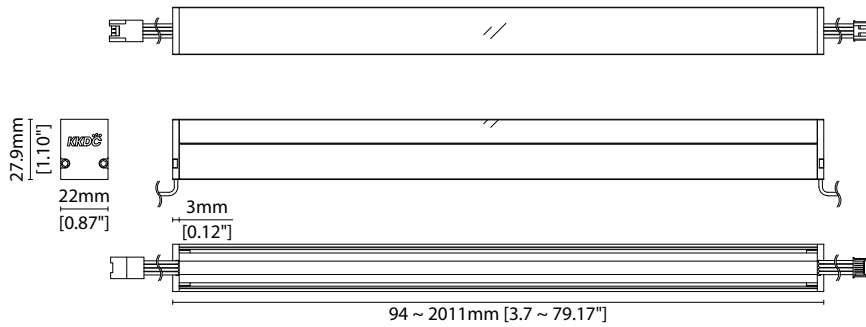
Dimensions	H28/W22/L94-2011mm (H1.1/W0.87/L3.70-79.17in)
PCB Cut-point	83.3mm increment/2000mm max (3.28in increment/78.74in max)
LED Pitch	13.9mm-72LED/m (0.55in - 22LED/ft)
Chip	RGB
Cover/Optics	Diffused (156°)
CCT	Red 620-625nm/Blue 455-460nm/Green 520-525nm
LED binning	5nm tolerance
CRI	N/A
Lifetime	50,000 hours @ 25°C (50,000 hours @ 77°F)
Operating temp	$T_a = -25$ to 55°C (T_c max = 70°C) $T_a = -13$ to 131°F (T_c max = 158°F)
IP Rating	IP40
Finish	Silver anodised
Mounting	Surface mounting via concealed clips or cable raceway
Power feed	Hardwire tails or male/female connectors
Control	DMX/DALI



Power consumption	Supply voltage	Supply current
15.6W/m (4.75W/ft)	24V DC	0.65A/m (0.20A/ft)

Diffused Cover

Red: 90lm/m (27lm/ft)
Green: 193lm/m (59lm/ft)
Blue: 32lm/m (10lm/ft)
RGB: 280lm/m (85lm/ft)



Diffused Cover
— C0 / C180 cd / 1000 lm - - - C90 / C270

Data derived from IESNA LM-79-08 accredited testing of production samples.

See KKDC website for product document updates.

www.kkdc.lighting

LINIGlowXLRGBS-03.03EN-20240516

Linear

LINEI Glow XL RGB

Code Table



FIXTURE

Model	Finish	Cover	Grade	LED	Colour (CCT)	Length Availability ¹	IP	Cable Length	Power Feed ²	Input
LINEI Glow XL	GX Silver Anodised SA	Diffused U cover 0	s	501	RGB RGB	m 94.3-2011mm 83.3mm increments i 3.71-79.17in 3.28in increments (Specify length code OR total run length)	IP40 40	300mm/11.81" 0300 1000mm/39.37" 1000	Single no sheath tail S00X Double no sheath tail D00X Single no sheath IP20 connector S20X Double no sheath IP20 connector D20X	DC 24V g

¹ Refer to **Length Availability List** or enter total run length instead of length code

² Refer to **Power Feed Options** on **Options** pages

Code Example:

GX	-	SA	-	0	-	s	-	501	-	RGB	-	m	511	-	40	-	0300	-	D00X	-	g
LINEI Glow XL		Silver Anodised		Diffused U cover				501		RGB		511mm		IP40		300mm/11.81"		Double no sheath tail		DC 24V	

ACCESSORIES

Mounting Accessories

KKCP-11	Concealed Clip
KKCR-01-1000	1000mm/39.37" Cable Raceway
KKCR-01-2000	2000mm/78.74" Cable Raceway
KKCR-01-3000	3000mm/118.11" Cable Raceway
KKJT-02	Joining Bar (allow one per join)

Connection Accessories

KKCN-07	4 PIN RGB male & female 50mm/1.97" pair
KKCN-09	4 PIN RGB male & female 300mm/11.81" pair
KKCN-11	4 PIN RGB 300mm/11.81" extension lead

* Refer to **Power feed** on **Accessories** pages

PSU/Driver

DALI/DMX

* Refer to **Driver/PSU Options** page for details or provide requirement and KKDC to offer the suitable option

* Refer to **Mounting accessories** on **Accessories** pages

LED ENGINE VARIANTS (LED STRIP TYPE)

Colour	LED	Lumen/m	Lumen/ft	W/m	W/ft	Spec Doc	Length	Increment
Single CCT	R007	386	118	7	2.13	LINEI Glow XL R007	94-2011mm (3.71-79.17in)	41.7mm (1.64in)
	R014	801	244	14	4.27	LINEI Glow XL R014	94-2011mm (3.71-79.17in)	41.7mm (1.64in)
	R020	1145	349	20	6.1	LINEI Glow XL R020	94-2011mm (3.71-79.17in)	41.7mm (1.64in)
	A040	2680	817	40	12.19	LINEI Glow XL A040	88-1511mm (3.46-59.49in)	38.46mm (1.51in)
Warm Dim/Dynamic White	R207	899	274	16	4.88	LINEI Glow XL R207	94-2011mm (3.71-79.17in)	83.3mm (3.28in)
RGB	501	Red 90 Green 193 Blue 32 RGB 280	Red 27 Green 59 Blue 10 RGB 85	15.6	4.75	LINEI Glow XL RGB	94-2011mm (3.71-79.17in)	83.3mm (3.28in)
RGBW	R201	689	210	20	6.1	LINEI Glow XL RGBW	136-2011mm (5.35-79.17in)	62.5mm (2.46in)

* Performance data: diffused cover, RGB

LINI Glow XL RGB

Length Availability List

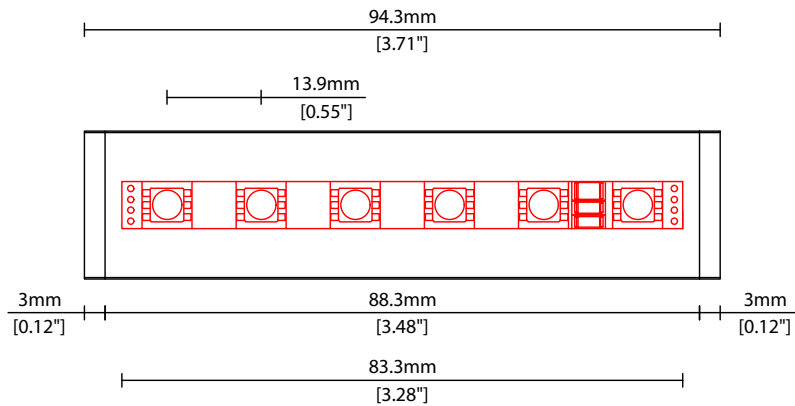


Length Code		Fixture Length ¹		LED Strip ²		End Cap Dimension ³		Wattage (W)	Output (lm)			
Metric	Imperial(US)	Metric	Imperial(US)	Metric	Imperial(US)	Metric	Imperial(US)		R	G	B	W
m0094	i0004	94mm	3.71in	83mm	3.28in	6mm	0.24in	1.30	8	16	3	23
m0178	i0007	178mm	7.00in	167mm	6.56in	6mm	0.24in	2.60	15	32	5	47
m0261	i0010	261mm	10.28in	250mm	9.84in	6mm	0.24in	3.90	23	48	8	70
m0344	i0014	344mm	13.56in	333mm	13.12in	6mm	0.24in	5.20	30	64	11	93
m0428	i0017	428mm	16.84in	417mm	16.41in	6mm	0.24in	6.50	38	80	13	117
m0511	i0020	511mm	20.12in	500mm	19.69in	6mm	0.24in	7.80	45	97	16	140
m0594	i0023	594mm	23.40in	583mm	22.97in	6mm	0.24in	9.10	53	113	19	163
m0678	i0027	678mm	26.68in	667mm	26.25in	6mm	0.24in	10.40	60	129	21	187
m0761	i0030	761mm	29.96in	750mm	29.53in	6mm	0.24in	11.70	68	145	24	210
m0844	i0033	844mm	33.24in	833mm	32.81in	6mm	0.24in	13.00	75	161	27	233
m0928	i0037	928mm	36.53in	917mm	36.09in	6mm	0.24in	14.30	83	177	29	257
m1011	i0040	1011mm	39.81in	1000mm	39.37in	6mm	0.24in	15.60	90	193	32	280
m1094	i0043	1094mm	43.09in	1083mm	42.65in	6mm	0.24in	16.90	98	209	35	303
m1178	i0046	1178mm	46.37in	1167mm	45.94in	6mm	0.24in	18.20	105	225	37	327
m1261	i0050	1261mm	49.65in	1250mm	49.22in	6mm	0.24in	19.50	113	241	40	350
m1344	i0053	1344mm	52.93in	1333mm	52.50in	6mm	0.24in	20.80	120	257	43	373
m1428	i0056	1428mm	56.21in	1417mm	55.78in	6mm	0.24in	22.10	128	273	45	397
m1511	i0059	1511mm	59.49in	1500mm	59.06in	6mm	0.24in	23.40	135	290	48	420
m1594	i0063	1594mm	62.77in	1583mm	62.34in	6mm	0.24in	24.70	143	306	51	443
m1678	i0066	1678mm	66.06in	1667mm	65.62in	6mm	0.24in	26.00	150	322	53	467
m1761	i0069	1761mm	69.34in	1750mm	68.90in	6mm	0.24in	27.30	158	338	56	490
m1844	i0073	1844mm	72.62in	1833mm	72.18in	6mm	0.24in	28.60	165	354	59	513
m1928	i0076	1928mm	75.90in	1917mm	75.47in	6mm	0.24in	29.90	173	370	61	537
m2011	i0079	2011mm	79.18in	2000mm	78.75in	6mm	0.24in	31.20	180	386	64	560

¹ Actual total overall length of light fixture (LED strip + end caps + void/wire hole)

² Actual length of PCB strip

³ Actual length of 2x end caps



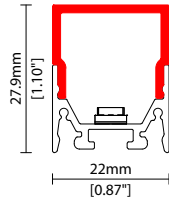


LINI Glow XL RGB Options



COVER/LENS OPTIONS

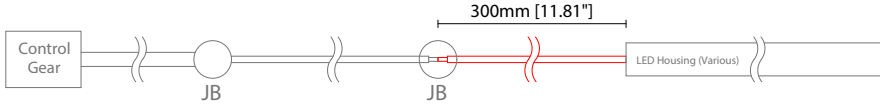
* Options are an integral part of the fixture ordering codes. Please refer to **Code Table** pages.



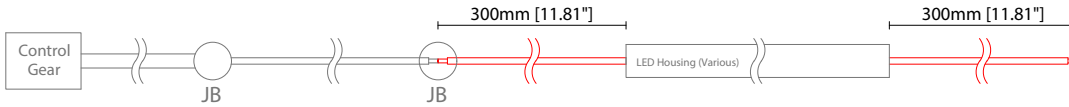
0 Diffused U cover
W22/H27.9mm (W0.87/H1.10")

POWER FEED OPTIONS

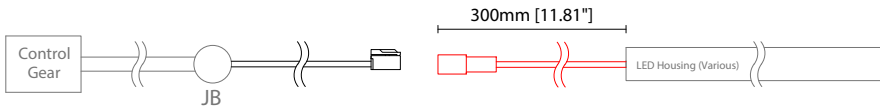
0300 S00X 300mm (11.81") Single no sheath tail



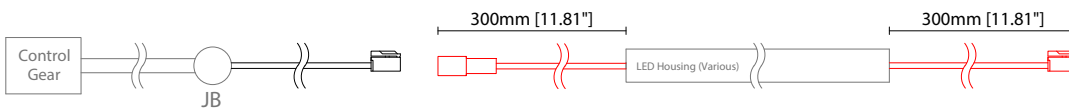
0300 D00X 300mm (11.81") Double no sheath tail



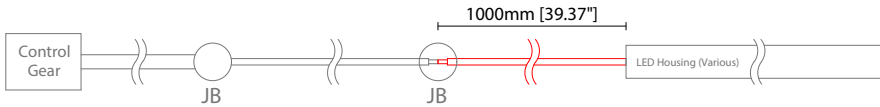
0300 S20X 300mm (11.81") Single no sheath IP20 connector



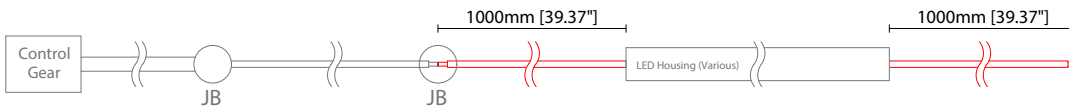
0300 D20X 300mm (11.81") Double no sheath IP20 connector



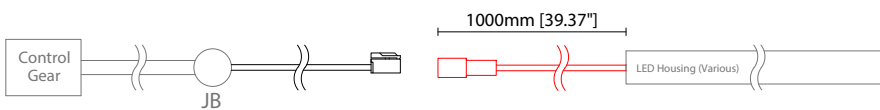
1000 S00X 1000mm (39.37") Single no sheath tail



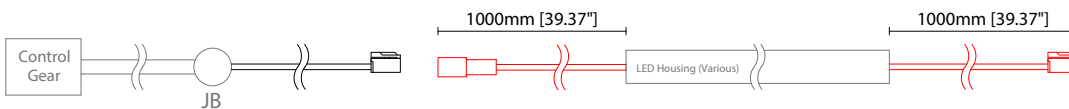
1000 D00X 1000mm (39.37") Double no sheath tail



1000 S20X 1000mm (39.37") Single no sheath IP20 connector



1000 D20X 1000mm (39.37") Double no sheath IP20 connector



Key

Control Gear Power supply, sub-controllers & control systems

JB Junction box / cable connection

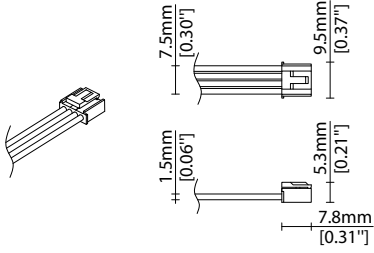
Linear

LINI Glow XL RGB Options

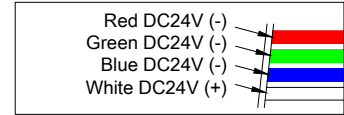
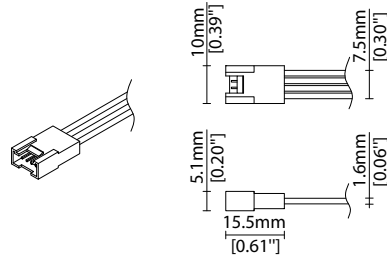


POWER FEED OPTIONS (CONTINUED)

4 Pin RGB Female Connector



4 Pin RGB Male Connector

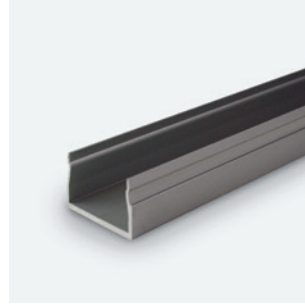
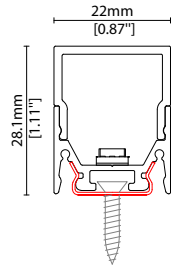


MOUNTING ACCESSORIES

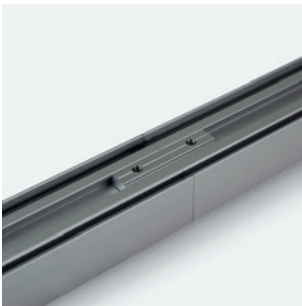
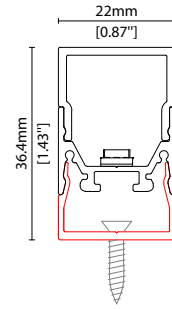
Note: Accessories are to be ordered separately with corresponding code shown below.



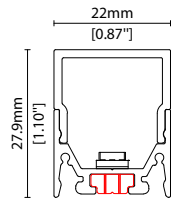
KKCP-11
 Concealed clip
 (allow 3 per metre/40in)
 S/Steel finish
 L20/W22/H28.1mm
 (L0.79/W0.87/H1.11")



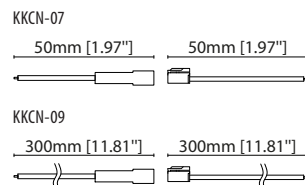
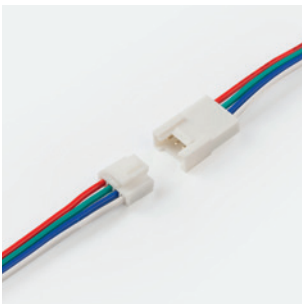
KKCR-01-1000 1000mm (39.37in)
KKCR-01-2000 2000mm (78.74in)
KKCR-01-3000 3000mm (118.11in)
 Cable raceway*
 Anodised aluminium finish
 W22/H36.4mm (W0.87/H1.43")
 * Cut & drilled to fit on site



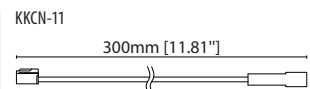
KKJT-02
 Joining bar* (allow 1 per join)
 Anodised aluminium finish
 L25mm (L0.98")
 * Mounting option required with
 Joining bar



POWER FEED



KKCN-07 50mm (1.97in) pair
KKCN-09 300mm (11.81in) pair
 4 PIN RGB male + female
 connector set



KKCN-11
 4 PIN RGB 300mm (11.81in)
 extension lead

KKDC CONTROL



IP20
Plastic housing
L170/W59/H29mm
(L6.69/W2.32/H1.14in)

KKDM-06 1-10V

visDIM dimmable sub-controller
(4 x 8A max @ 12-36V)



IP20
Plastic housing
L170/W53.4/H28mm
(L6.69/W2.10/H1.10in)

KKSC-05 DMX

visDIM dimmable sub-controller
(4 x 5A max @ 12-36V)



IP20
Plastic housing
L170/W59/H29mm
(L6.69/W2.32/H1.14in)

KKDL-02 DALI

visDIM dimmable sub-controller
(4 x 8A max @ 12-36V)



IP20
Plastic housing
L166/W53.4/H23mm
(L6.54/W2.10/H0.91in)

KKDL-03 DALI

visDIM dimmable sub-controller
(4 x 5A max @ 12-36V)

AVAILABLE PSU OPTIONS

Control Mode	PSU (Order Code)	Input Voltage AC	Output Voltage DC	Rated Output Current	Rated Power	Dim %	IP Rating
Switched	CEN-60-24	90-295V	24V	2.5A	60W	-	IP67
	HLG-60H-24	90-305V	24V	2.5A	60W	-	IP67
	HLG-100H-24	90-305V	24V	4.0A	100W	-	IP67
	HLG-150H-24	90-305V	24V	6.3A	150W	-	IP67
	HLG-240H-24	90-305V	24V	10A	240W	-	IP67
0-10V (1-10V)	PWM-40-24	90-305V	24V	1.67A	40W	100-0.15 (100-10)	IP67
	PWM-60-24	90-305V	24V	2.5A	60W	100-0.15 (100-10)	IP67
	PWM-90-24	90-305V	24V	3.67A	90W	100-0.15 (100-10)	IP67
	PWM-120-24	90-305V	24V	5.0A	120W	100-0.15 (100-10)	IP67
DALI	LIN100A1	120-277V	24V	1A per channel	100W	100-0.1	IP66/IP40
DMX RGB	LIN100A1	120-277V	24V	1.33A per channel	100W	100-0.1	IP66/IP40
DMX RGBW	LIN100A1	120-277A	24V	1A per channel	100W	100-0.1	IP66/IP40

Flicker Free Options - Combination of PSU+ sub-controller

Control Mode	PSU (Order Code)	Sub-controller (Order Code)	Input Voltage AC	Output Voltage DC	Rated Output Current	Rated Power	Dim %	IP Rating PSU/ Sub-controller
0-10V or 1-10V	CEN-60-24	KKDM-06	90-295V	24V	2.5A	60W	100-0.9	IP67/IP20
	HLG-60H-24	KKDM-06	90-295V	24V	2.5A	60W	100-0.9	IP67/IP20
	HLG-100H-24	KKDM-06	90-295V	24V	4.0A	100W	100-0.9	IP67/IP20
	HLG-150H-24	KKDM-06	90-295V	24V	6.3A	150W	100-0.9	IP67/IP20
	HLG-240H-24	KKDM-06	90-295V	24V	10.0A	240W	100-0.9	IP67/IP20
DALI	CEN-60-24	KKDL-02/03	90-295V	24V	2.5A	60W	100-0.1	IP67/IP20
	HLG-60H-24	KKDL-02/03	90-305V	24V	2.5A	60W	100-0.1	IP67/IP20
	HLG-100H-24	KKDL-02/03	90-305V	24V	4.0A	100W	100-0.1	IP67/IP20
	HLG-150H-24	KKDL-02/03	90-305V	24V	6.3A	150W	100-0.1	IP67/IP20
	HLG-240H-24	KKDL-02/03	90-305V	24V	10.0A	240W	100-0.1	IP67/IP20
DMX RGB	CEN-60-24	KKSC-05	90-295V	24V	2.5A	60W	100-0.9	IP67/IP20
	HLG-60H-24	KKSC-05	90-305V	24V	2.5A	60W	100-0.9	IP67/IP20
	HLG-100H-24	KKSC-05	90-305V	24V	4A	100W	100-0.9	IP67/IP20
	HLG-150H-24	KKSC-05	90-305V	24V	6.3A	150W	100-0.9	IP67/IP20
	HLG-240H-24	KKSC-05	90-305V	24V	10.0A	240W	100-0.9	IP67/IP20

¹ The items shown above cover the most frequently used specification but does not exhaust the possible options

² PSU and/or driver can be chosen from the table, or KKDC may recommend the best option upon receipt of the controls requirement and installation environment

³ Electrical shop drawing will include detailed information of PSU and relevant control drivers

⁴ Cut sheets are available on the controls section of www.kkdc.lighting or upon request